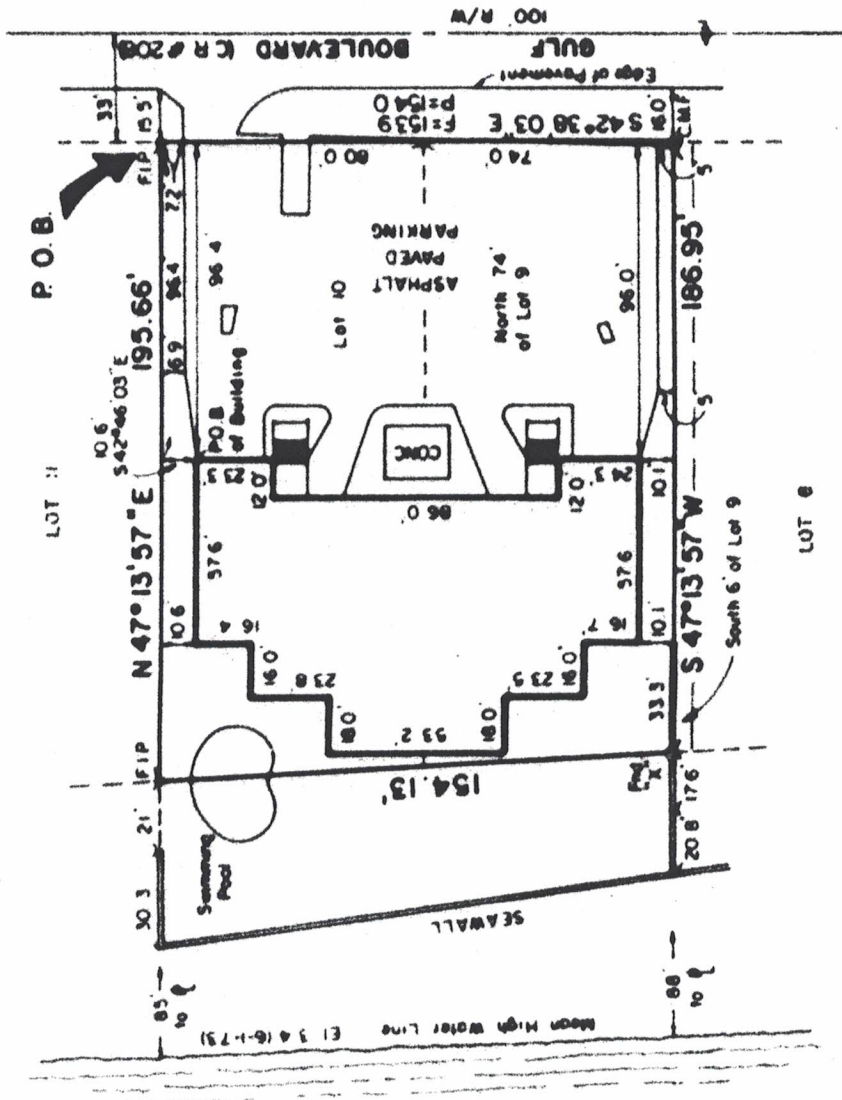




Scale 1" = 50'

GULF OF MEXICO



LOT 9

LOT 10

P.O.B.

GULF BOULEVARD (CR #208)
100' R/W

Edge of Pavement

S 42° 38' 03" E P=154.0
F=153.9

ASPHALT PAVED PARKING

Lot 10

North 74 of Lot 9

CONC.

P.O.B. of Building

Swimming Pool

SEAWALL

Mean High Water Line EI 3.4 (6-1-73)

10.9

208 176

33.5

10.1

10.1

10.1

10.1

10.1

10.1

23.8

16.0

18.0

33.2

12.0

12.0

12.0

12.0

12.0

12.0

12.0

12.0

12.0

57.6

10.6

10.6

10.6

10.6

10.6

10.6

10.6

10.6

10.6

10.6

10.6

10.6

154.13'

21'

30.3

21'

21'

21'

21'

21'

21'

21'

21'

21'

21'

195.66'

10.6

10.6

10.6

10.6

10.6

10.6

10.6

10.6

10.6

10.6

10.6

10.6

S 42° 38' 03" E

P=154.0

F=153.9

74.0

80.0

80.0

80.0

80.0

80.0

80.0

80.0

80.0

80.0

186.95'

5

5

5

5

5

5

5

5

5

5

5

5

S 47° 13' 57" W

186.95'

5

5

5

5

5

5

5

5

5

5

5

South 6' of Lot 9

208 176

33.5

10.1

10.1

10.1

10.1

10.1

10.1

10.1

10.1

10.1

10.1

186.95'

5

5

5

5

5

5

5

5

5

5

5

5

186.95'

5

5

5

5

5

5

5

5

5

5

5

5

186.95'

5

5

5

5

5

5

5

5

5

5

5

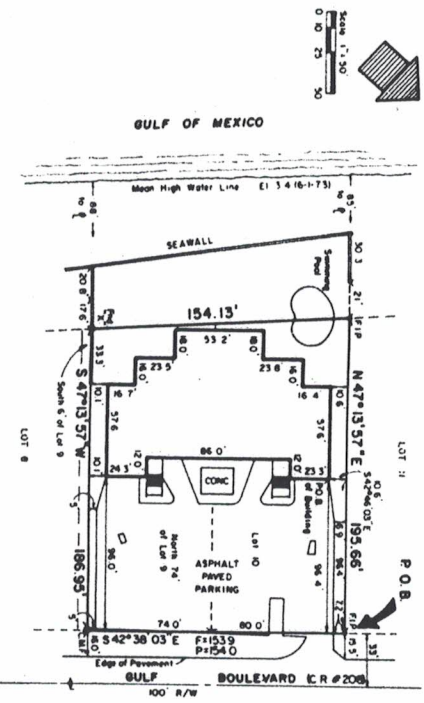
5

REDINGTON PLACE
A CONDOMINIUM

SECTION 5, TOWNSHIP 31 SOUTH, RANGE 15 EAST
PINELLAS COUNTY, FLORIDA

LEGAL DESCRIPTION:
THE NORTH 75 FEET OF LOT 9 AND ALL OF LOT 10, BLOCK 24, AND ADDITION TO REDINGTON BEACH HOMES ACCORDING TO THE PLAT THEREOF AS RECORDED IN PLAT BOOK 25, PAGE 11, PUBLIC RECORDS OF PINELLAS COUNTY, FLORIDA.

LEGAL DESCRIPTION OF BUILDING:
FROM THE NORTHEAST CORNER OF LOT 10 AT ITS INTERSECTION WITH THE WESTERN RIGHT OF WAY LINE OF SAID BUILDING; RUN S 97° 13' 57" W., 56.4 FEET; THENCE S 88° 00' 00" W., 10.8 FEET TO THE POINT OF BEGINNING OF THE BUILDING; THENCE ALONG THE SOUTHERLY BOUNDARY OF SAID BUILDING AS SHOWN ON THE PLAT THEREOF; THENCE S 88° 00' 00" W., 42 FEET; THENCE S 97° 13' 57" E., 12.5 FEET; THENCE S 88° 00' 00" W., 42 FEET; THENCE S 97° 13' 57" E., 12.5 FEET TO THE POINT OF BEGINNING OF THE BUILDING; THENCE ALONG THE WESTERN RIGHT OF WAY LINE OF SAID BUILDING AS SHOWN ON SHEETS 2 OF 3.



DEDICATION:
KNOW ALL MEN BY THESE PRESENTS THAT WE, JOHN J. BOZZIE, JR., PRESIDENT OF FLORIDA BAYVIEW HOMES, INC., and JOHN A. BOZZIE, JR., SECRETARY OF SAID CORPORATION, AS SET FORTH IN THE DECLARATION OF REDINGTON BEACH HOMES, INC., A FLORIDA GENERAL PARTNERSHIP, AS DULY FILED AND RECORDED IN THE PUBLIC RECORDS OF PINELLAS COUNTY, FLORIDA, DO HEREBY DEDICATE AS COMMON ELEMENTS TO THE COMMON ELEMENTS OF SAID CONDOMINIUM PROJECT, A CONDOMINIUM PROJECT, THAT ALL COMMON ELEMENTS, INCLUDING THE COMMON ELEMENTS SHOWN HEREON FOR PARKING, AREAS AND ARE FOR THE PRIVATE USE OF THE COMMUNITARIANS. ALL PARKING SPACES AND OTHER SPACES NOT DESCRIBED AS PARKING OR LIMITED COMMON ELEMENTS ARE ALSO DEDICATED AS PART OF THE COMMON ELEMENTS.

John J. Bozzie, Jr.
Witness
John A. Bozzie, Jr.
Witness

John J. Bozzie, Jr.
John J. Bozzie, Jr., President
John A. Bozzie, Jr.
John A. Bozzie, Jr., Secretary

ACKNOWLEDGEMENT:
STATE OF FLORIDA
I HEREBY CERTIFY THAT ON THIS 7th DAY OF JANUARY, 1983, BEFORE ME PERSONALLY APPEARED JOHN J. BOZZIE, JR., PRESIDENT OF FLORIDA BAYVIEW HOMES, INC., AND JOHN A. BOZZIE, JR., SECRETARY OF SAID CORPORATION, AS SET FORTH IN THE DECLARATION OF REDINGTON BEACH HOMES, INC., A FLORIDA GENERAL PARTNERSHIP, AND THEY HAVE BEEN DULY IDENTIFIED BY ME AS THE PERSONS DESCRIBED IN SAID DECLARATION. I HAVE READ SAID DECLARATION TO THEM AND TO THE PERSONS DESCRIBED THEREIN AND THEY HAVE ACKNOWLEDGED TO ME THAT THEY EXECUTED SAID INSTRUMENT FOR THE PURPOSES THEREIN EXPRESSED. IN WITNESS WHEREOF, I HAVE HEREUNTO SET MY HAND AND SEAL OF OFFICE AT PINELLAS COUNTY, FLORIDA, THIS 7th DAY OF JANUARY, 1983.

SURVEYOR'S CERTIFICATE:
I HEREBY CERTIFY THAT THIS MAP WAS DRAWN FROM A SURVEY MADE BY ME ON DECEMBER 30, 1982, AND THAT THIS MAP IS A CORRECT REPRESENTATION OF THE LANDS PLATTED AND THE IMPROVEMENTS DESCRIBED THEREON AND SAID IMPROVEMENTS WERE CONSTRUCTED AS OF THE DATE OF SAID SURVEY. THESE IMPROVEMENTS WHICH ARE SHOWN HEREON ARE AN ACCURATE REPRESENTATION OF THE LOCATION AND DIMENSIONS OF THE IMPROVEMENTS AND THAT THE IDENTIFICATION, LOCATION AND DIMENSIONS OF THE COMMON ELEMENTS AND OF EACH UNIT CAN BE DETERMINED FROM THESE MATERIALS.

John J. & John A. Bozzie
SURVEYORS, INC., INC.
P.O. BOX 1710
CLEARWATER, FLA. 34616

Prepared by:
WEST COAST ENGINEERING CORPORATION
700 FOURTH STREET NORTH
ST. PETERSBURG, FLORIDA 33702
(813) 527-6628
FILE NO. 32053